

INVESTIGATION OF FORECASTING OF PROBLEMATIC KEY PHRASE QUERIES OVER IN DATA MINING

Sowjanya Reddy Mallreddy
Assoc. Prof.
Department of CSE
Siddhartha Institute of Technology and Sciences
Narapally, Hyderabad, Telangana, India

Ballepu Naveen Kumar
Asst. Prof.
Department of ECE
Siddhartha Institute of Technology and Sciences
Narapally, Hyderabad, Telangana, India

Abstract - key expression questions on databases give helpful section to information, however regularly experience from low positioning best, i.e., low accuracy and additionally review, as demonstrated in most recent benchmarks. It may be important to build up inquiries which may probably have low positioning top notch to expand the individual joy. For outline, the framework could prescribe to the individual substitute questions for such unpleasant inquiries. On this paper, we dissect the qualities of troublesome inquiries and exhort a novel structure to quantify the level of primary issue for a key expression question over a database, since both the constitution and the substance material of the database and the inquiry result. We assess our inquiry fundamental issue expectation demonstrate contrary to two viability benchmarks for stylish watchword look positioning methodologies. Our experimental result show that our model predicts the hard questions with intemperate precision. Extra, we blessing a suite of advancements to slice the brought about time overhead.
Keywords: low accuracy, Database, Key expression, information, novel structure

I. INTRODUCTION

(i) Structure of information Mining

Regularly, information mining (frequently called information or capabilities disclosure) is the strategy for looking at learning from uncommon points of view and abridging it into important ability - understanding that can be used to create income, cuts bills, or both. Information mining programming is viewed as one of an amount of scientific instruments for analyzing data. It licenses clients to examine information from numerous one of kind measurements or edges, order it, and condense the connections perceived. In fact, learning mining is the approach of finding connections or examples among many fields in expansive social databases.

(ii) Data Mining Works

Indeed, even as enormous scale know-how innovative know-how has been developing separate exchange and investigative strategies, information mining supplies the hyperlink between the 2. Information mining application breaks down connections and examples in spared exchange learning in light of open-finished purchaser inquiries. Various sorts of explanatory application are to be had: factual, PC examining, and neural systems. Normally, any of four assortments of connections are looked for:

Courses: put away data is utilized to find information in foreordained associations. For example, a bistro chain could mine client purchase data to evaluate when supporters counsel with and what they likely request. This know-in what capacity may be utilized to extend activity by method for having everyday specials.

Bunches: information objects are gathered in advance with consistent connections or client inclinations. For instance, information will likewise be mined to set up showcase fragments or buyer affinities.

Affiliations: information may likewise be mined to decide affiliations. The lager diaper representation is a delineation of acquainted mining.

Successive examples: information is mined to expect direct examples and improvements. For instance, an outside mechanical assembly retailer may foresee the likelihood of a knapsack being purchased arranged on a supporter's buy of napping baggage and mountain climbing footwear.

Information mining comprises of 5 primary components: 1) Extract, change, and payload exchange learning onto the data distribution center process.

- 2) store and deal with the information in a multidimensional database approach.
 - 3) furnish information passage to business examiners and understanding innovation masters.
 - 4) Analyze the information with the guide of programming application.
 - 5) present the data in an important format, reminiscent of a diagram or table.
- Un is takable levels of examination are accessible:

(iii) Manufactured neural systems: Non-straight prescient things that review through instructing and take after natural neural systems in structure.

(iv) Hereditary calculations: Optimization methodology that utilization framework likened to hereditary mix, change, and regular choice in a plan headquartered on the standards of customary advancement.

Decision timber: Tree-molded developments that mean units of determinations. These choices create standards for the arrangement of a dataset. Particular determination tree ways join Classification and Regression timber (CART) and Chi rectangular programmed interaction Detection (CHAID). Truck and CHAID are choice tree techniques utilized for grouping of a dataset. They outfit a calculation you can take after to a fresh out of the plastic new (unclassified) dataset to foresee which records can have a given last outcome. Truck fragments a dataset by method for making 2-implies parts while CHAID portions utilizing chi square exams to make multi-technique parts. Truck quite often requires less data instruction than CHAID.

Closest neighbor framework: A way that orders each record in a dataset headquartered on a mix of the lessons of the k document(s) most like it in an authentic dataset (where k=1). Commonly called the alright closest neighbor way.

Administer enlistment: The extraction of helpful if-then standards from information in view of measurable significance.

Learning representation: The noticeable understanding of precarious connections in multidimensional information. Representations instruments are utilized to outline information connections.

Massive amounts of information: The amount of data so astounding it should be investigated through mechanized strategies e.G. Satellite ability, charge card exchanges and so on. Uproarious, fragmented learning: Imprecise information is the normal for all

information arrangement. troublesome information constitution: customary measurable investigation not feasible Heterogeneous learning spared in inheritance techniques

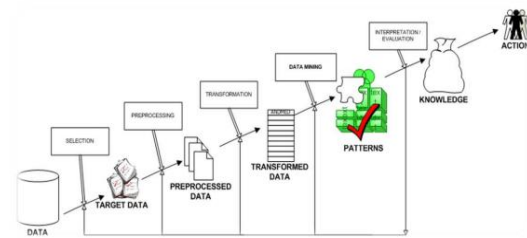


Fig 1: Knowledge mining

(v) Advantages of learning Mining

- 1) It is a standout amongst the most intense offerings which are to be had at introduce. With the guide of data mining, you'll have the capacity to acknowledge vital understanding concerning the benefactors and their conduct for an unmistakable arrangement of items and diagram and break down, retailer, mine and load information including them
- 2) An scientific CRM display and vital industry related choices can be made with the help of data mining as it helps in offering an entire summation of customers
- 3) An unending amount of associations have built up data mining activities and it has helped them see their have organizations make an excellent advancement of their promoting approaches (Campaigns) four) knowledge mining is more often than not used by companies with an awesome supporter center. For its bendy nature to the extent appropriateness is included is getting utilized energetically in capacities to anticipate essential data including industry assessment and client obtaining practices
- 5) speedy paced and incite access to learning alongside monetary handling systems have made data mining presumably the most reasonable offerings that an organization seek

II. LITERATURE SURVEY

Effective IR style key phrase search over relational databases,

V. Hristidis, L. Gravano, and Y. Papakonstantinou applications in which straightforward content exists together with organized data are unavoidable. Business social database administration strategies (RDBMSs) usually outfit questioning abilities for printed content qualities that contain contemporary learning recovery (IR) pertinence positioning strategies, however this pursuit execution requires that inquiries indicate the assigned section or segments contrary to which a given rundown of key

expressions is to be coordinated. This necessity can likewise be unwieldy and firm from a client perspective: great answers for a watchword question may must be "amassed" - in most likely unanticipated courses by turning into an individual from tuples from two or three individuals from the family. This announcement has animated progressive research on free-sort catchphrase seek over RDBMSs.

Start: top-alright watchword question in social databases, Creators: Y. Luo, X. Lin, W. Wang, and X. Zhou With the developing measure of content learning put away in social databases, there is an interest for RDBMS to help catchphrase inquiries over content information. As an inquiry result is generally gathered from two or three social tables, conventional IR-sort rating and question investigation ways can't be connected specifically. In this paper, we pick up information of the viability and the productivity issue of noting topapprove enter express inquiry in social database frameworks. We suggest another positioning parts by utilizing adjusting existing IR strategies headquartered on a normal thought of computerized record. In examination with past methodologies, our new appraising procedure is unassuming yet strong, and assents with human observations.

A system to strengthen key expression look over substance databases, Creators: V. Ganti, Y. He, and D. Xin, key expression look over substance databases (e.G., item, film databases) is a primary concern. Flow strategies for key expression look on databases may typically return deficient and loose outcomes. From one perspective, they both require that essential substances contain all (or most) of the inquiry watchwords, or that significant elements and the question catchphrases happen together in a couple of records from a known collection. Neither of those necessities might be fulfilled for an amount of individual inquiries. Accordingly comes about for such questions are inclined to be deficient in that amazingly focal substances won't not be once more. Be that as it may, despite the fact that some returned substances consolidate all (or most) of the inquiry key expressions, the expectation of the key terms inside the question would be unmistakable from that in the elements. Accordingly, the outcomes would likewise be uncertain.

A probabilistic recovery demonstrate for semistructured information, Creators: J. Kim, X. Xue, and B. Croft Recovering semi structured (XML) data consistently requires either an organized inquiry practically identical to X Path, or a catchphrase question that doesn't contemplate structure. On this

paper, we derive basic know-how mechanically from watchword inquiries and contain this into a recovery mannequin. Additionally, we support the possibility of a mapping shot, which maps every single inquiry express directly into a related subject (or XML detail). This mapping likelihood is utilized as a weight to join the dialect units evaluated from every last subject. Tests on two trial accumulations demonstrate that our recovery mannequin built up on mapping probabilities beats gauge systems inconceivably.

Structured annotations of internet queries,

Creators: N. Sarkas, S. Pappas, and P. Tsapras Inquiries asked for on web motors like google more often than not objective organized data, much the same as business stock, film indicate events, or carrier plans. Nonetheless, surfacing noteworthy result from such data is an especially difficult test, due to the unstructured dialect of the online questions, and the forcing versatility and speed necessities of web seek. In this paper, we watch idle organized semantics in web questions and create Structured Annotations for them.

III. FRAMEWORK STUDY

3.1 Existing System

There had been synergistic endeavors to outfit normal benchmarks and assessment frameworks for key expression seek routes over databases. One exertion is the data driven track of INEX Workshop Queries had been provided with the guide of donors of the workshop. However another exertion is the grouping of Semantic Search Challenges (Sem Search). The result show that even with organized learning, finding the coveted answers for watchword inquiries stays to be a hard mission. All the more inquisitively, viewing towards the positioning acceptable of the superb performing techniques on the two workshops.

Perils of Present Process:

continue from low appraising tasteful. Performing inadequately on a subset of questions.

Proposed Procedure:

1. We put forward a principled system and proposed novel calculations to quantify the measure of the inconvenience of a question over a DB, utilizing the positioning power standard.
2. Centered on our structure, we suggest novel calculations that proficiently anticipate the adequacy of a catchphrase question.

3.2 Preferences of knowledge mining:

1. Advertising/Retail: information mining enables publicizing organizations to fabricate units in light of recorded information to anticipate who will answer to the new promoting efforts reminiscent of spontaneous mail, internet promoting effort et cetera. By means of the result, advertisers will have reasonable procedure to pitch moneymaking stock to unmistakable purchasers.
2. Finance/Banking information mining offers monetary affiliations understanding about home loan mastery and FICO rating announcing. By building a mannequin from old buyer s data, the bank and monetary college can check phenomenal and risky advances. Additionally, learning mining enables banks to end up plainly mindful of deceitful bank card exchanges to protect bank card proprietor.
3. Assembling by method for applying data mining in operational designing information, producers can recognize off base types of gear and check surest oversee parameters. For instance semiconductor makers has a test that even the states of assembling conditions at particular wafer development crops are an indistinguishable, the wonderful of wafer are parcel the same and some for obscure causes even has deserts.
4. Governments Data mining helps government office by methods for burrowing and assessing records of financial exchange to develop designs that may see illegal tax avoidance or hoodlum leisure activities.
5. Regulation requirement: data mining can help enactment masters in selecting convict suspects and in addition catching these lawbreakers by assessing propensities in region, wrongdoing structure, propensity, and different examples of practices.
6. Researchers: information mining can help specialists by methods for dashing up their insight inspecting strategy; appropriately, allowing these additional opportunity to chip away at different activities.

3.3 MODULES

Information and question Modeling

On this module, first we reinforce a framework display for our proposed procedure. We demonstrate a database as an accumulation of substance sets. Each substance set S is a gathering of elements E. For outline, motion pictures and people are two element sets in IMDB.

Rating for Structured data

On this module we compensate the positioning Robustness standard, which contends that there's a (ghastly) relationship between's the disadvantage of an inquiry and its rating power inside the nearness of commotion in the data.

Debasement Module

The main undertaking in making utilization of the positioning Robustness statute for databases is to plot data defilement for organized information.

Positioning Module

Each appraising calculation utilizes a few measurements about inquiry terms or traits esteems over the whole substance of DB. A few cases of such data are the amount of events of an inquiry term in all characteristics estimations of the DB or finish amount of quality esteems in every single trait and substance set. These world actualities are put away in M (metadata) and that I (modified files) in the SR Algorithm pseudocode.

IV. DESIGN

4.1 Information DESIGN

The information configuration is the connection between the learning technique and the client. It involves the developing detail and methodologies for data instructing and those means are principal to put exchange data in to a usable kind for preparing will likewise be done by methods for investigating the pc to peruse data from a composed or printed report or it might emerge through having people entering the data straight into the approach. The outline of enter concentrates on controlling the measure of info required, controlling the mistakes, averting drag out, maintaining a strategic distance from additional means and holding the framework simple. The information is outlined in the kind of way so it supplies assurance and convenience with keeping up the privateness. Info Design respected the following issues:

1. What information should acknowledge as info?
2. How the information must be orchestrated or coded?
3. The exchange to guide the running work force in giving enter.
4. methods for influencing prepared to enter approvals and ventures to take after when blunder emerge.

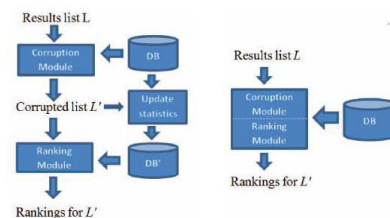


Fig 2: Process Structure

Yield DESIGN

A best yield is one, which meets the guidelines of the best client and presents the seeing absolutely. In any strategy result of handling are conveyed to the clients and to other approach by methods for yields. In yield outline it is resolved how the comprehension is to be uprooted for on the spot require and furthermore the troublesome multiplication yield. It is the primary and direct source comprehension to the client. Successful and shrewd yield configuration enhances the procedure relationship to help client determination making.

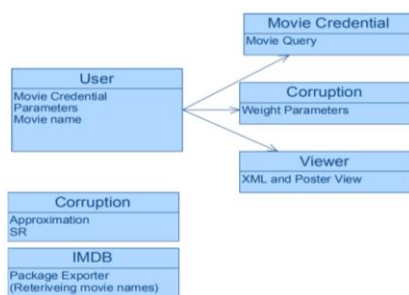


Fig 2: Class Diagram

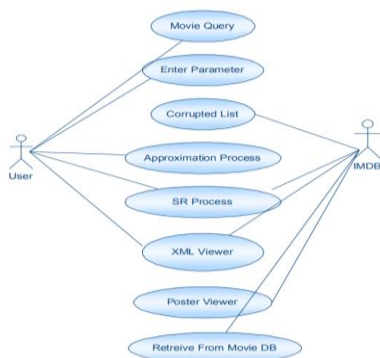


Fig 3: Use Case Diagram

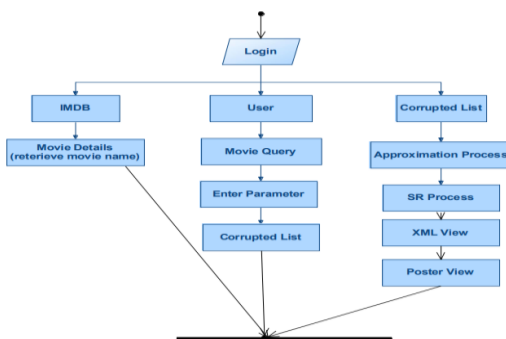


Fig 4: Activity Diagram

Practical Test Plan

Two assortments of utilitarian necessities are there. They're Admin and individual

Functionalities of Admin

1. Hook up with cloud server
2. View all stockpiling records in a cloud server
3. Add records to server
4. Generate keys to records
5. Encrypt and ship to clients
6. Files are offer to correct workforce of members

Functionalities of individual

1. Register
2. Login
3. Connect with server
4. File downloading demand
5. Down load and unscramble document information

UNIT TEST

The technique for thinking of exploring different avenues regarding is to recognize screws up. Trying different things with is the approach of endeavoring to see every conceivable fault or frail spot in a work thing. It supplies a framework to take a gander at the value of extra things, sub assemblies, social occasions and in addition a completed thing it is the strategy of rehearsing application with the objective of guaranteeing that the. Unit exploring different avenues regarding consolidates the arrangement of scope cases that endorse that within programming good judgment is working fittingly, and that program inputs convey bona fide yields. Blend evaluations are expected to check worked in programming parts to affirm if they truly continue running as one programming. Taking a gander at is occasion pushed and is extra worried with the focal last delayed consequence of screens or fields.

Technique Test

Technique looking at guarantees that the total coordinated program strategy meets guidelines. It tests a design to ensure perceived and unsurprising result.

Integration Checking Out

Application blend testing is the incremental compromise trying different things with of no less than two joined programming extra things on a singular stage to give frustrations incited by techniques for interface surrenders.

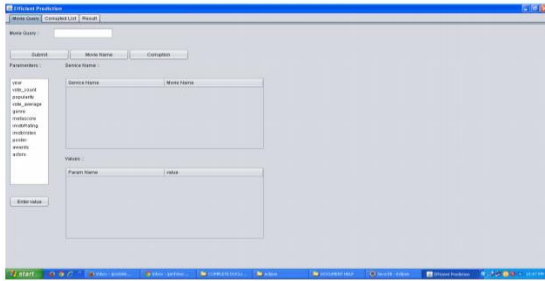


Fig 5: Monitor Shots

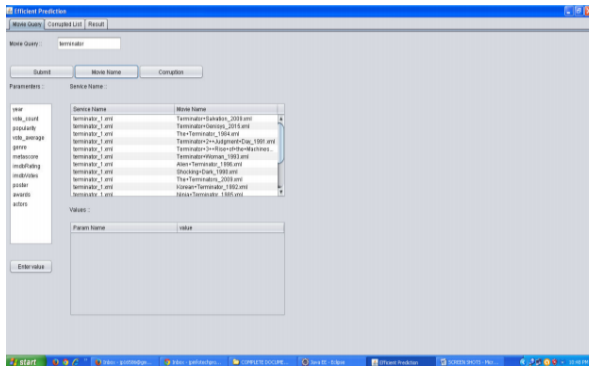


Fig 5: Displaying Movie Names

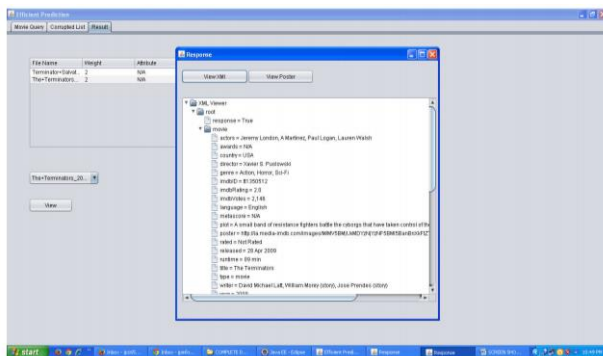


Fig 6: Result Page

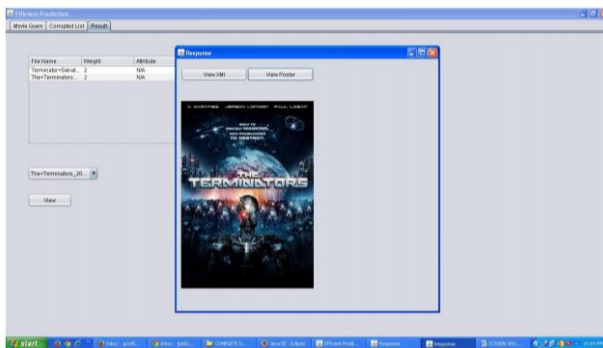


Fig 10: Searching

ACCEPTANCE TAKING A GANDER AT

Singular Acceptance testing is an essential time of any errand and requires tremendous speculation by the tip person. It in like manner ensures that the method meets the sensible necessities.

V. CONCLUSIONS

We exhibited the radical trouble of anticipating the adequacy of key expression inquiries over DBs. We affirmed that the present expectation strategies for inquiries over unstructured information sources can't be without trouble used to cure this inconvenience. We put forward a principled structure and proposed novel calculations to quantify the level of the block of an inquiry over a DB, making utilization of the positioning heartiness standard. Fixated on our structure, we prompt novel calculations that adequately anticipate the viability of a key expression inquiry. Our tremendous investigations show that the calculations foresee the difficulty of an inquiry with genuinely low mistake and unimportant time overheads.

REFERENCES

- [1] V. Hristidis, L. Gravano, and Y. Papakonstantinou, capable IRstyle key articulation look for over social databases, in Proc. Twenty ninth VLDB Conf., Berlin, Germany, 2003, pp. 850861.
- [2] Y. Luo, X. Lin, W. Wang, and X. Zhou, SPARK: prime-okay catchphrase request in social databases, in Proc. 2007 ACM SIGMOD, Beijing, China, pp. 115126.
- [3] V. Ganti, Y. He, and D. Xin, keyword++: A structure to fortify key articulation look for over component databases, in Proc. VLDB Endowment, Singapore, Sept. 2010, vol. Three, no. 12, pp. 711722.
- [4] J. Kim, X. Xue, and B. Croft, A probabilistic recuperation exhibit for semistructured learning, in Proc. ECIR, Toulouse, France, 2009, pp. 228 239.
- [5] N. Sarkas, S. Pappas, and P. Tsaparas, Structured clarifications of web request, in Proc. 2010 ACM SIGMOD Int. Conf. Control. Information, Indianapolis, IN, usa, pp. 771 782.
- [6] G. Bhalotia, A. Hulgeri, C. Nakhe, S. Chakrabarti, and S. Sudarshan, key articulation examining and looking in databases utilizing BANKS, in Proc. eighteenth ICDE, San Jose, CA, joined states, 2002, pp. 431440.
- [7] C. Watching out for, P. Raghavan, and H. Schä'tze, An Introduction to data Retrieval. Huge apple, new york: Cambridge school Press, 2008.
- [8] A. Trotman and Q. Wang, Overview of the INEX 2010 learning driven track,in ninth Int. Workshop INEX 2010, Vugh, The Netherlands, pp. 1 32,

- [9] T. Tran, P. Mika, H. Wang, and M. Grobelnik, Semsearch 'S10, in Proc. Third Int. WWW Conf., Raleigh, NC, joined states, 2010.
- [10] S. C. Townsend, Y. Zhou, and B. Croft, Predicting question execution, in Proc. SIGIR 02, Tampere, Finland, pp. 299 306.
- [11] A. Nandi and H. V. Jagadish, Assisted addressing utilizing instantresponse interfaces, in Proc. SIGMOD 07, Beijing, China, pp. 1156 1158.
- [12] E. Demidova, P. Fankhauser, X. Zhou, and W. Nejdl, DivQ: Diversification for watchword look for over composed databases, in Proc. SIGIR 10, Geneva, Switzerland, pp. 331 338.
- [13] Y. Zhou and B. Croft, rating force: A novel framework to expect question execution, in Proc. fifteenth ACM Int. CIKM, Geneva, Switzerland, 2006, pp. 567 574.
- [14] B. He and that I. Ounis, question execution figure, Inf. Syst., vol. 31, no. 7, pp. 585 594, Nov. 2006.
- [15] okay. Collins-Thompson and P. N. Bennett, Predicting question capability by technique for portrayal, in