

## “Analysis of the effect of machining parameters on surface roughness of EN 36 Nickel Steel”

**Abstract :**

Quality and productivity play significant role in today’s manufacturing market. From customers’ viewpoint quality is very important because the extent of quality of the procured item (or product) influences the degree of satisfaction of the consumers during usage of the procured goods. Therefore, every manufacturing or production unit should concern about the quality of the product. Quality of a product can be described by various quality attributes. The attributes may be quantitative or qualitative. So our present study is based on the analysis of machining parameters on surface roughness on EN 36 shafts using Carbide and Cobalt tool on CNC trainer lathe. In metal cutting and manufacturing industries, surface finish of a product is very crucial in determining the quality. Good surface finish not only assures quality, but also reduces manufacturing cost. Surface finish is important in terms of tolerances, it reduces assembly time and avoids the need for secondary operation, thus reduces operation time and leads to overall cost reduction. Besides, good-quality turned surface is significant in improving fatigue strength, corrosion resistance, and creep life. In this research, the main objective is to study the effect of cutting speed and depth of cut on surface roughness of EN 36 in turning operation.

**Keywords:** quality, productivity, straight turning, surface roughness, flank wear, contact type stylus profilometer.

**Experimentation**

Literature depicts that a considerable amount of work has been carried out by previous investigators for modeling, simulation and parametric optimization of surface properties of the product in turning operation. Issues related to tool life, tool wear, cutting forces have been addressed to. Apart from optimizing a single response (process output), multiobjective optimization problems have also been solved. Accordingly the present study has been done through the following plan of experiment.

- a) Checking and preparing the CNC Lathe ready for performing the machining operation.
- b) Cutting EN36 shafts by power saw and performing initial turning operation in Conventional Lathe to get desired dimension of the work pieces.
- c) Performing straight turning operation on specimens in various cutting environments involving various combinations of process control parameters like:- spindle speed, feed and depth of cut.
- d) Measuring surface roughness and surface profile with the help of a portable contact type stylus profilometer.

**Input Process Variables**

Spindle Speed(RPM)	Feed Rate(mm/min)	Depth of Cut(mm)
125	5	0.1
400	20	0.3
800	40	0.6
1200	60	0.9

**Equipments used**

**1. CNC Lathe**

Specifications

Distance between centers mm	300
Swing over Bed mm	150
Swing over Cross Slide mm	60

Maximum Machining Diameter mm 30

Maximum Machining Length mm 60

**2. Tools Used**

1. Tungsten Carbide Tip- Tungsten carbide is an inorganic chemical compound (specifically, a carbide) containing equal parts of tungsten and carbon atoms. Sintered tungsten carbide cutting tools are very abrasion resistant and can also withstand higher

temperatures than standard high speed steel tools. Its density is around 15.7 gm/cm<sup>3</sup>. Hardness is 90 on Rockwell Scale. Its Young's Modulus is 670 GPa. Nose Radius is 0.8 mm. Machining can be performed with six tips.

2. **Cobalt Tip**- It has excellent resistance to abrasion and very good red-hardness for working difficult materials. Its hardness is around 65 on Rockwell Scale. It has the nose radius of 0.8 mm. Machining can be done with three cutting tips.

**3. Servo Cutting Oil**

It forms a milky emulsion with water and contains rust inhibitor to impart anti-rust, anti-corrosion properties and a biocide to prevent bacterial growth in the

emulsion. This oil has superior cooling and lubricating properties which impart excellent surface finish and minimizes tool wear. For stable working, emulsion oil should be added to water in concentration of 10% for turning operations.

**4. Workpeice Material**

Workpeice material taken for the turning is EN 36 (Nickel Steel). It is **case hardening steel** specifically designed for carburizing to give a very hard case with strong core. It is generally used in gears, crane shafts and gear shafts in various automobiles. Its hardness is 55 on Rockwell Scale. Its composition is as follows

Elements	Carbon	Nickel	Chromium	Silicon	Manganese	Sulphur	Phosphorous	Molybdenum
%	0.700	3.200	1.050	0.250	0.420	0.010	0.012	0.140

**DATA ANALYSIS**

**5. Contact Type Stylus Profilometer**

This instrument is used to measure the surface roughness of the machined workpeice. Sampling length is taken to be 5 mm. Average force applied is 0.7 mN. Least count of the instrument is 0.1 microns. Measurement is taken at three different points and their average values are taken.

**Roughness Values for Tungsten Carbide Tool**

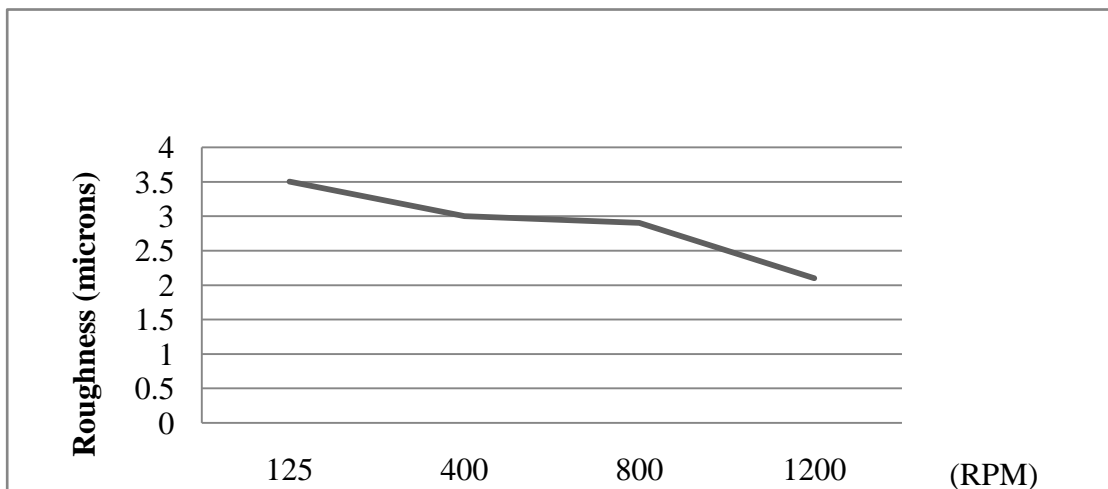
**1. Surface Roughness Values with Variable Cutting Speed**

Fixed Parameters

Depth of Cut = 0.2 mm

Feed Rate = 10 mm/min

RPM	Ra <sub>1</sub> (in microns)	Ra <sub>2</sub> (in microns)	Ra <sub>3</sub> (in microns)	Average Ra (in microns)
125	3.5	3.9	3.1	3.5
400	3.2	3.0	2.8	3.0
800	3.6	2.8	2.3	2.9
1200	2.3	1.8	2.2	2.1



**Figure: Surface Roughness vs Cutting Speed**

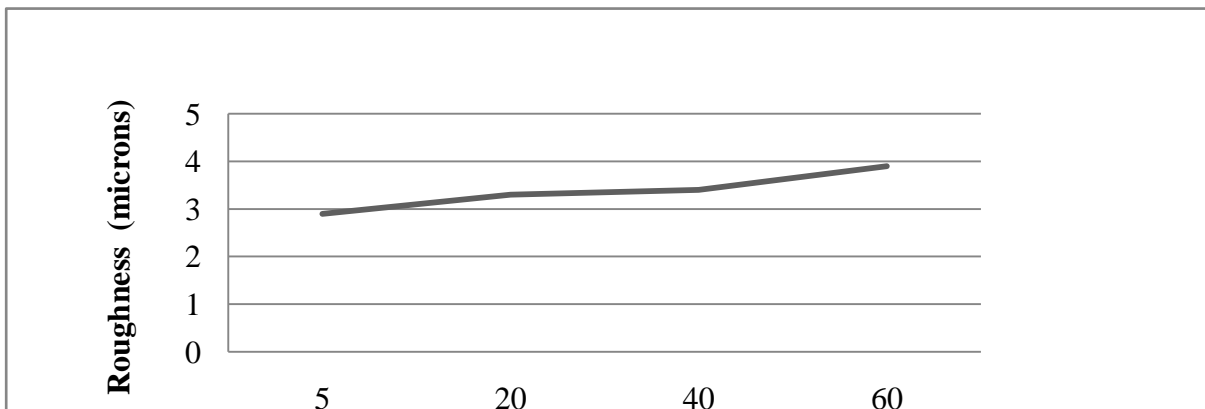
**2. Surface Roughness Values with Variable Feed Rate**

Fixed Parameters

Depth of Cut = 0.2 mm

Cutting Speed = 400 RPM

Feed Rate (in mm/min)	Ra <sub>1</sub> (in microns)	Ra <sub>2</sub> (in microns)	Ra <sub>3</sub> (in microns)	Average Ra (in microns)
5	2.4	2.8	3.5	2.9
20	3.2	3.4	3.3	3.3
40	2.9	3.1	4.2	3.4
60	3.4	3.6	4.7	3.9



**Figure: Surface Roughness vs Feed Rate**

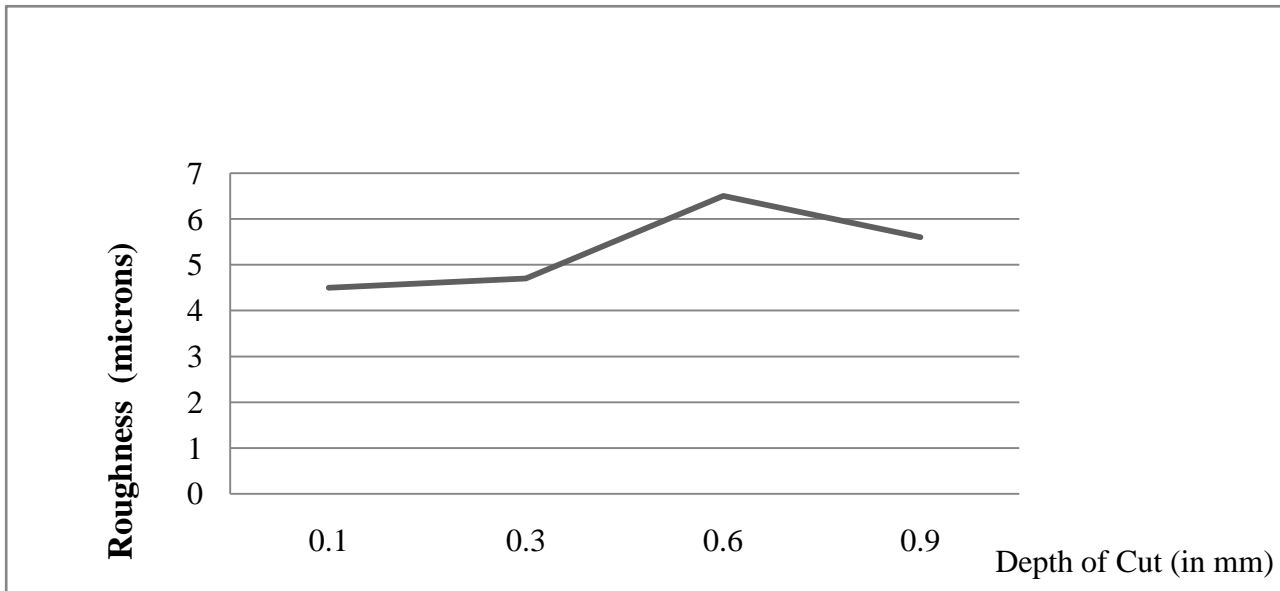
**3. Surface Roughness Values with Variable Depth of Cut**

Fixed Parameters

Cutting Speed = 400 RPM

Feed Rate = 10 mm/min

Depth Of Cut (in mm)	Ra <sub>1</sub> (in microns)	Ra <sub>2</sub> (in microns)	Ra <sub>3</sub> (in microns)	Average Ra (in microns)
0.1	5.0	4.6	3.9	4.5
0.3	4.8	5.1	4.2	4.7
0.6	6.3	6.0	7.2	6.5
0.9	4.9	6.4	5.5	5.6



**Figure: Surface Roughness vs Depth of Cut**

**Roughness Values for Cobalt Tool Insert**

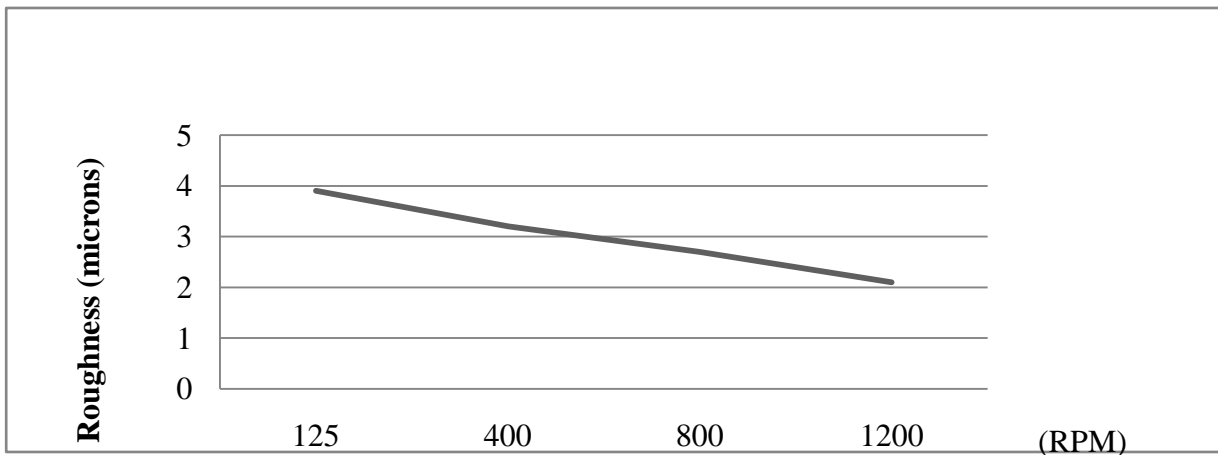
**4. Surface Roughness Values with Variable Cutting Speed**

Fixed Parameters

Depth of Cut = 0.2 mm

Feed Rate = 15 mm/min

RPM	Ra <sub>1</sub> (in microns)	Ra <sub>2</sub> (in microns)	Ra <sub>3</sub> (in microns)	Average Ra (in microns)
125	3.4	4.0	4.3	3.9
400	3.6	3.0	3.0	3.2
800	2.5	3.8	1.8	2.7
1200	2.6	2.4	1.9	2.3



**Figure: Surface Roughness vs Cutting Speed**

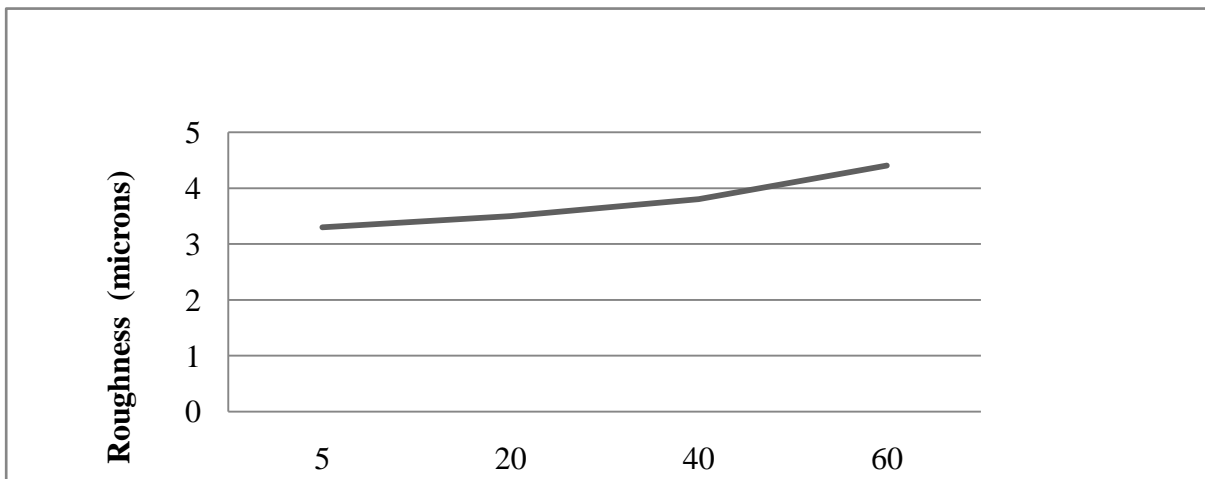
**5. Surface Roughness Values with Variable Feed Rate**

Fixed Parameters

Depth of Cut = 0.4 mm

Cutting Speed = 500 RPM

Feed Rate (in mm/min)	Ra <sub>1</sub> (in microns)	Ra <sub>2</sub> (in microns)	Ra <sub>3</sub> (in microns)	Average Ra (in microns)
5	3.6	3.1	3.2	3.3
20	3.7	3.4	3.4	3.5
40	4.1	3.9	3.4	3.8
60	4.7	4.2	4.3	4.4



**Figure: Surface Roughness vs Feed Rate**

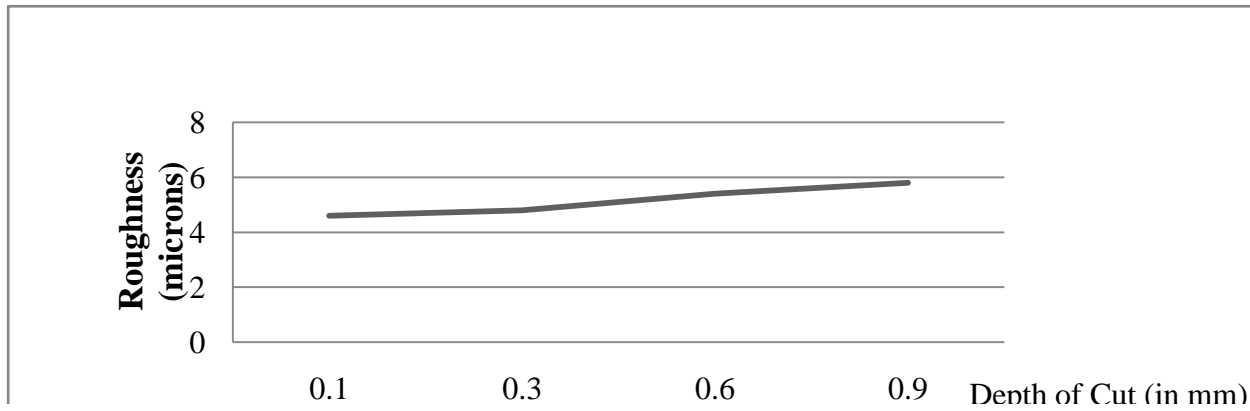
**6. Surface Roughness Values with Variable Depth of Cut**

Fixed Parameters

Cutting Speed = 500 RPM

Feed Rate = 15 mm/min

Depth Of Cut (in mm)	Ra <sub>1</sub> (in microns)	Ra <sub>2</sub> (in microns)	Ra <sub>3</sub> (in microns)	Average Ra (in microns)
0.1	4.8	4.1	4.9	4.6
0.3	5.0	4.6	4.8	4.8
0.6	5.1	5.3	5.8	5.4
0.9	5.5	5.7	5.9	5.8



**Figure: Surface Roughness vs Depth of Cut**

## RESULTS AND CONCLUSIONS

### Result and Discussion

The study was undertaken to investigate the effect of process parameters on surface roughness during dry turning operation for Nickel steel EN 36. Turning operation was carried out on CNC Trainer Lathe machine using various machining parameters. Machining data of surface roughness was tabulated accordingly. Two types of tool material was used namely Tungsten Carbide insert and Cobalt Insert. A contact type Stylus profilometer was used to calculate the surface roughness produced. Surface roughness is determined from the vertical stylus displacement produced during transverse travelling on surface irregularities. The measurement was displayed on the digital screen. Following are the relationship between process parameters and surface roughness-

#### (i) Depth of cut:

- Increasing the depth of cut increases the cutting resistance and the amplitude of vibrations. As a result, cutting temperature also rises.
- Therefore, it is expected that surface quality will deteriorate.

#### (ii) Feed:

- Experiments show that as feed rate increases surface roughness also increases due to the increase in cutting force and vibration.

#### (iii) Cutting speed:

- Increase in cutting speed improves the surface finish due to the continuous reduction in built up edges.

- The formation of built up edges is reduced due to the rise in temperature.
- Further increase in cutting speed the surface roughness continues to decrease.

### Conclusions

The study deals with analysis of multiple surface roughness parameters in search of an optimal parametric combination (favorable process environment) capable of producing desired surface quality of the turned product in a relatively lesser time. EN 36 Nickel Steel has been machined under different cutting conditions to investigate the relation between machining parameters and surface roughness and following conclusion is given-

- Process parameters do not have the same effect for every response.
- Most effecting parameter is feed rate followed by depth of cut. Cutting Speed is least significant factor affecting surface roughness.
- The optimum value of surface roughness (Ra) comes out to be 2.1 microns at depth of cut 0.2mm, feed rate 10mm/min and RPM 1200 for Tungsten Carbide insert.
- The optimum value of surface roughness (Ra) comes out to be 2.3 microns at depth of cut 0.2mm, feed rate 15mm/min and RPM 1200 for Cobalt insert.
- Turning with servo cutting oil we get the optimum surface roughness equals to 2.0 microns.
- Maximum absolute error was 0.64 microns and minimum was 0.15 microns. Average percentage error was 11.27%.
- In low cutting speeds, the discontinuous form chips produced in machining may be changed to continuous form.
- The selection of cutting fluids for machining processes generally provides various benefits such as longer tool life, higher surface finish quality and better dimensional accuracy.

### REFERENCES

1. Effect of cutting edge geometry and workpiece hardness on surface generation in the finish hard turning of EN36 steel, Jeffrey D Thiele, Shreyes N. Melkote.
2. Effects of cutting edge geometry, feed rate and cutting speed on surface roughness and forces in turning of AISI 8620 steel, Tugrul Ozel, Kong Hsu, Erol Zeren.
3. Antony J., (2000), "Multi-response optimization in industrial experiments using Taguchi's quality loss function and Principal Component Analysis", *Quality and Reliability Engineering International*, Volume 16, pp.3-8.
4. Ahmed S. G., (2006), "Development of a Prediction Model for Surface Roughness in Finish Turning of Aluminium", *Sudan Engineering Society Journal*, Volume 52, Number 45, pp. 1-5.
5. Choudhury S. K. and Bartarya G., (2003), "Role of temperature and surface finish in predicting tool wear using neural network and design of experiments", *International Journal of Machine Tools and Manufacture*.
6. Chien W.-T. and Tsai C.-S., (2003), "The investigation on the prediction of tool wear and the determination of optimum cutting conditions in machining 17-4PH stainless steel", *Journal of Materials Processing Technology*.
7. Effects of Machining Parameters on Surface Quality of the Ultra High Molecular Weight Polyethylene (UHMWPE)(2003)
8. J. L. C. Salles M. T. T. Gonçalves Optimizing Machining Parameters during Turning Process Suleiman Abdulkareem, Usman Jibrin Rumah and Apasi Adaokoma (2011).
9. Empirical model for Surface Roughness in hard turning based on Analysis of Machining Parameters and Hardness values of various Engineering Materials(2012), by K. Arun Vikram, Ch. Ratnam.
10. Improved model to predict machined surface roughness based on the cutting vibrations signal during hard turning (2010) by S. Delijaicov , F. Leonardi , E.C. Bordinassi , G.F. Batalha.